

**Byron Avenue
Motspur Park, KT3 6EZ**

£675,000 Freehold



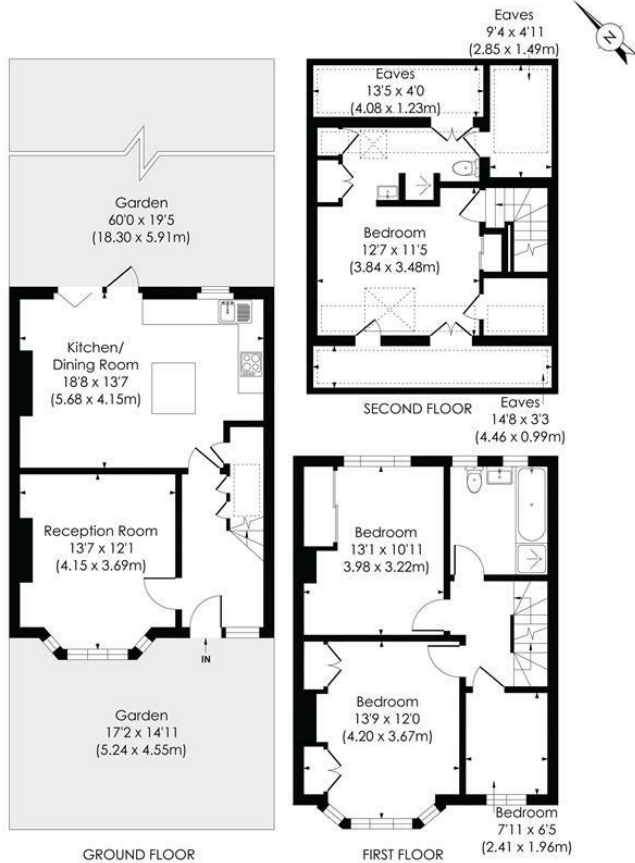
This beautifully presented (1,444 sqft/134.15 sqm) THREE BEDROOM, TWO BATHROOM 1930's mid terrace house has a stunning open plan kitchen/reception room, an extended loft/ hobby room and a large landscaped garden. Located on a popular residential road less than 0.1m to Motspur Park Station, local amenities and the outside space of the Sir Joseph Hood Memorial Playing fields. There is also a lovely separate front reception room, modern family bathroom, off street parking and potential to extend s.t.p.p.

BYRON AVENUE, KT3

Approx. Gross Internal Floor Area

1444 Sq. ft/134.15 Sq. m (Including Reduced Height)

1203 Sq. ft/111.78 Sq. m (Excluding Reduced Height)



© Pixangle Property Marketing Ltd. info@pixangle.com Tel: 0208 870 2118



This floor plan has been prepared for the purpose of illustration only in accordance with the latest RICS code of measuring practice and is not to scale. All measurements and areas are approximate and whilst every effort has been made to ensure the accuracy of the plan contained here, no responsibility is taken for any error, omission or misstatement.

- Three Bedroom - Mid Terrace 1930's House
- Less than 0.1 Miles to Motspur Park Station
- Extended Loft/ Craft/ Hobby Room
- Stunning Kitchen/Dining Room
- Large Landscaped Garden
- Separate Front Reception Room
- Off Street Parking
- Potential to Extend S.T.P.P
- Council Tax Band - D
- EPC Rating - D



Energy Efficiency Rating		Current	Potential
Very energy efficient - lower running costs			
(92 plus)	A		
(81-91)	B		
(69-80)	C		
(55-68)	D		
(39-54)	E		
(21-38)	F		
(1-20)	G		
Not energy efficient - higher running costs			
England & Wales		EU Directive 2002/91/EC	

For Free Mortgage Quote and Best Mortgage Rates, call Ellisons Mortgage Advisor on 0208 944 9595



Although these particulars are believed to be correct, their accuracy is not guaranteed and they do not form part of any contract.

Celebrating 30 years of successful Sales and Lettings in Merton

